



Your Guide

to Living at SummerWood

Hoffman
SummerWood
Community

ENGAGING PEOPLE.

COMFORTABLE LIVING.

Imagine...

CULTURE OF SERVICE.

Hoffman
SummeryWood
Community

Now that you've imagined the possibilities that Hoffman SummerWood Community offers, use this booklet to take the next step, and turn those possibilities into reality.

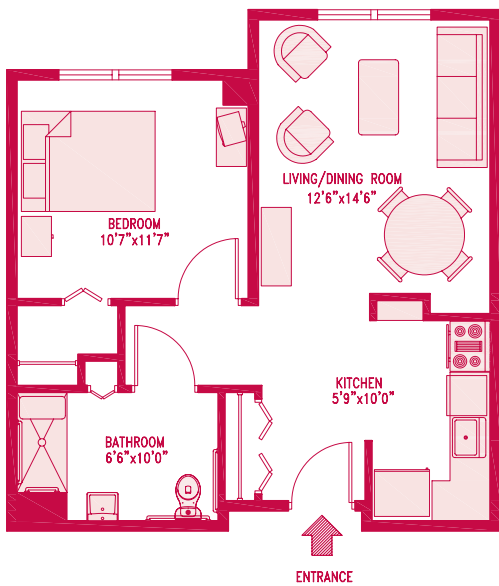
THE GUIDE INCLUDES:

- **FLOOR PLANS** FOR ALL OF OUR SPACIOUS AND LUXURIOUS APARTMENTS FOR YOU TO CHOOSE FROM
- **SAMPLE MENUS** OF OUR FRESHLY PREPARED DINNERS THAT YOU WILL DELIGHT IN
- **ACTIVITIES AND EVENTS** YOU CAN ENGAGE IN
- **CONTACT INFORMATION** FOR WHEN YOU WANT TO CALL FOR MORE INFORMATION OR WHEN YOU ARE READY TO TAKE A PERSONAL TOUR WITH US
- **DRIVING DIRECTIONS** FOR YOUR CONVENIENCE

Bring this guide with you when you come in for your tour. Use it to note your favorite apartment styles, to list your questions about amenities and activities you're most interested in, or just to jot down reminders to yourself.

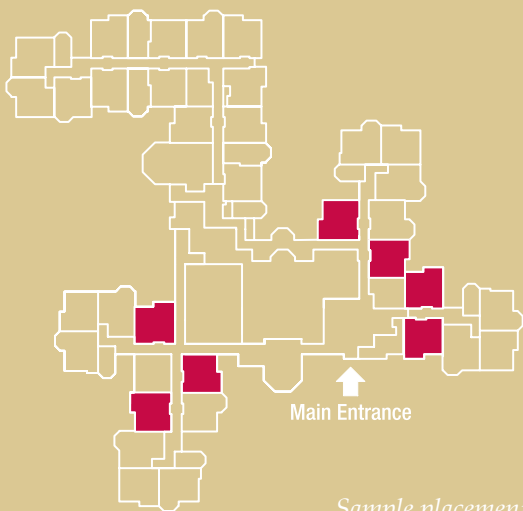
IMAGINE THE POSSIBILITIES!
...AND LET US HELP YOU
MAKE THEM HAPPEN!

THE APPLE



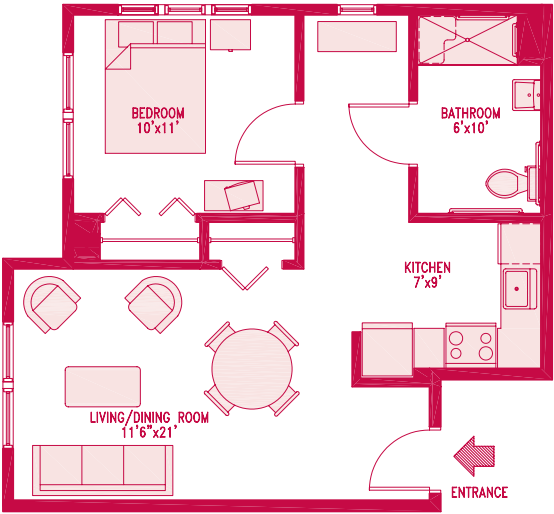
1 BEDROOM
566 S.F.
1ST, 2ND & 3RD FLOOR
WALK-IN CLOSET

Measurements are approximate



Sample placement

The Ash



1 BEDROOM

603 S.F.

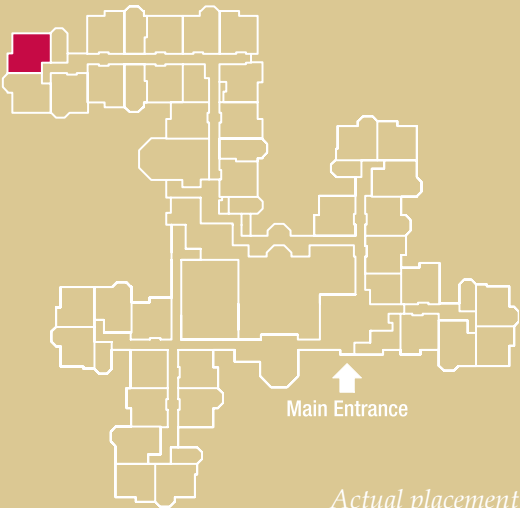
1ST & 2ND FLOOR

ADDITIONAL BEDROOM WINDOWS

ALCOVE WITH WINDOW

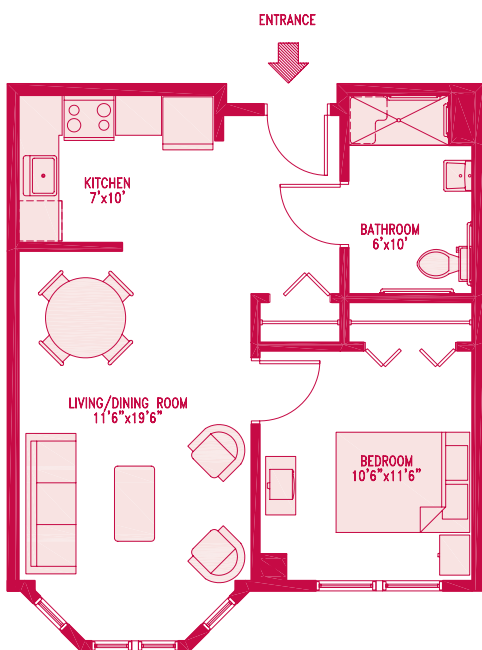
CORNER LOCATION

Measurements are approximate



Actual placement

THE ASPEN



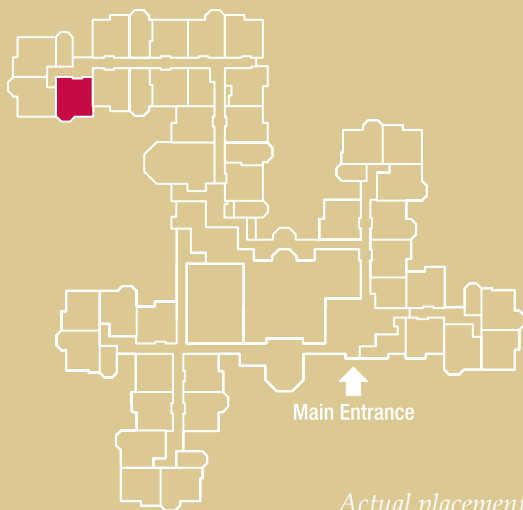
1 BEDROOM

601 S.F.

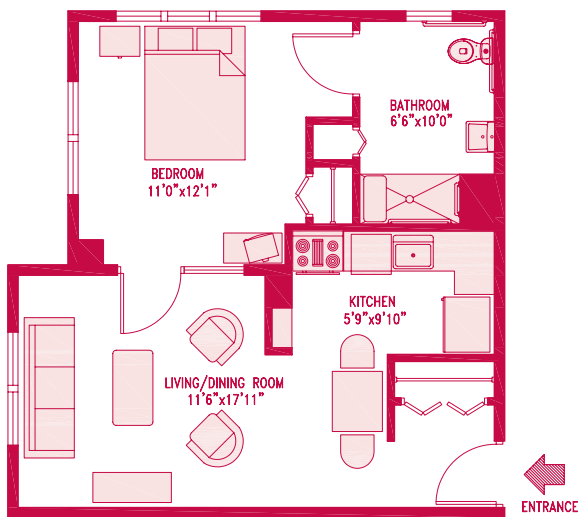
1ST, 2ND, 3RD FLOOR

BAY WINDOW

Measurements are approximate



THE BEECH



1 BEDROOM

527 S.F.

1ST & 2ND FLOOR

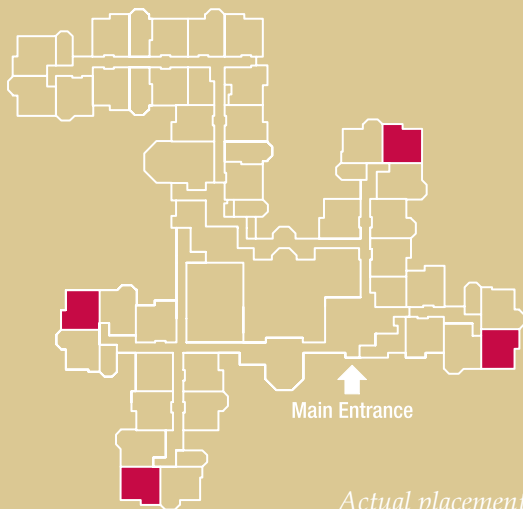
ADDITIONAL BEDROOM WINDOWS

BATHROOM WINDOW

FRENCH DOORS

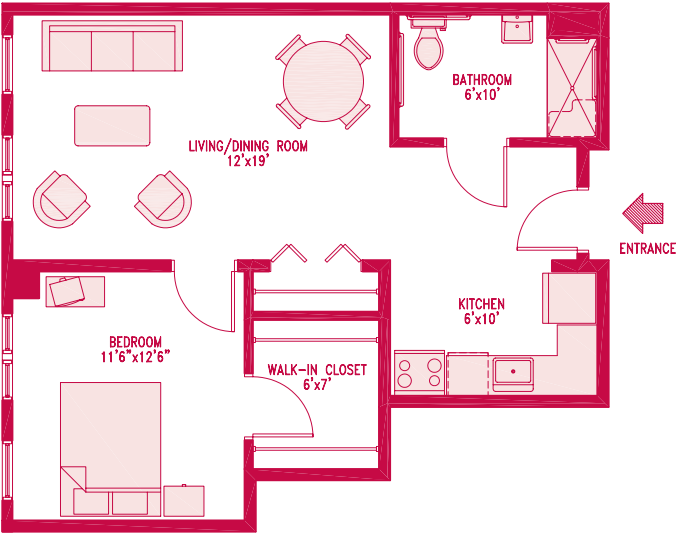
CORNER LOCATION

Measurements are approximate



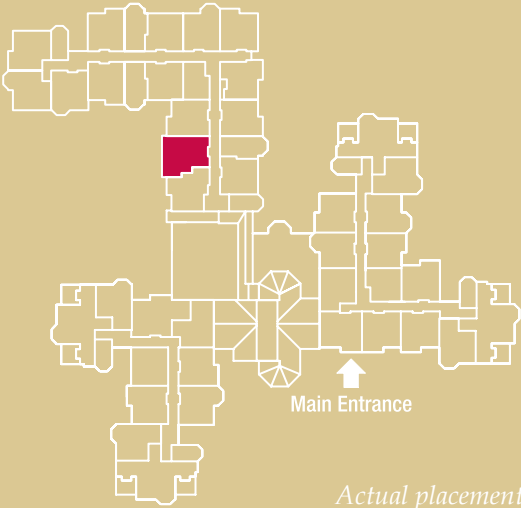
Actual placement

The Birch



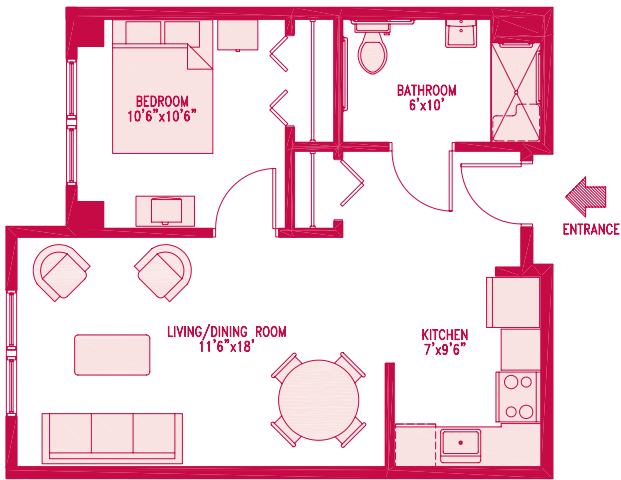
1 BEDROOM
683 S.F.
2ND & 3RD FLOOR
LARGE WALK-IN CLOSET

Measurements are approximate



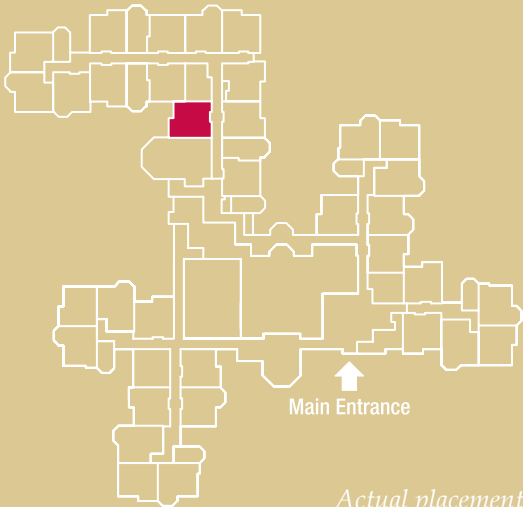
Actual placement

THE CATALPA



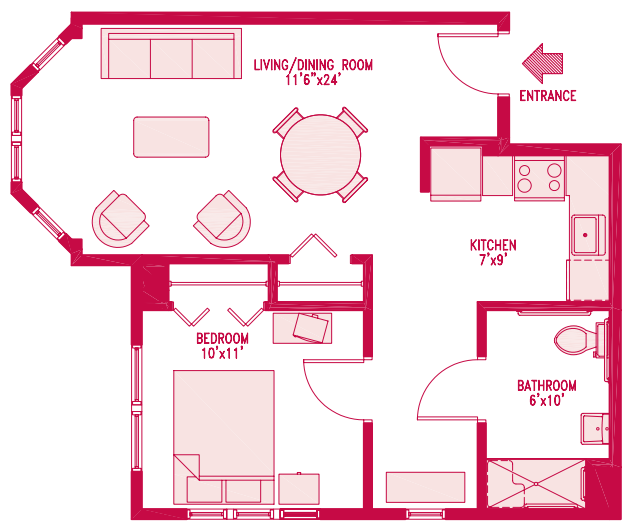
1 BEDROOM
580 S.F.
1ST, 2ND & 3RD FLOOR
LARGE BEDROOM CLOSET

Measurements are approximate



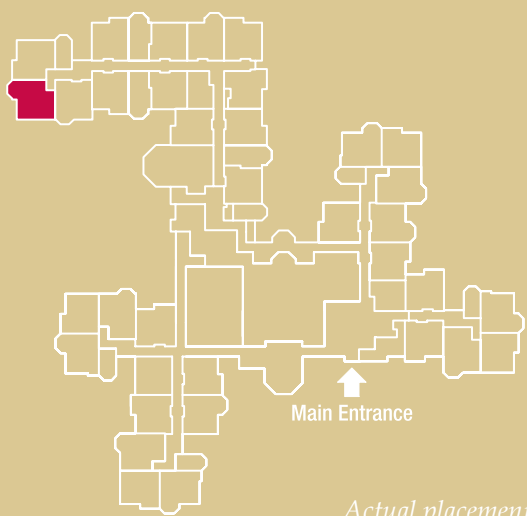
Actual placement

THE CEDAR



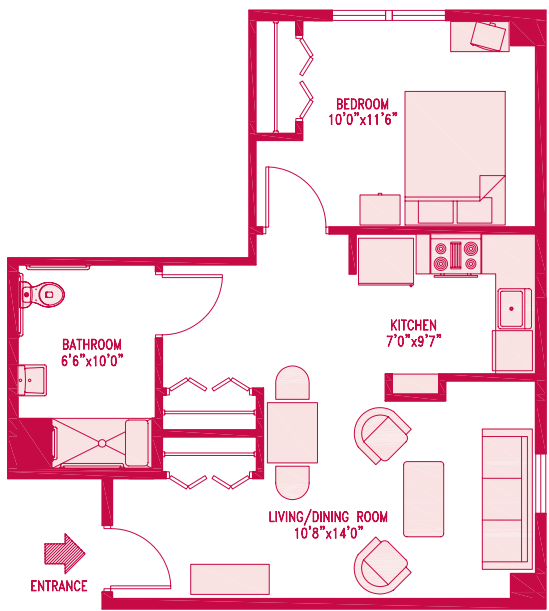
- 1 BEDROOM
- 629 S.F.
- 1ST & 2ND FLOOR
- BAY WINDOW
- ADDITIONAL BEDROOM WINDOWS
- ALCOVE WITH WINDOW
- CORNER LOCATION

Measurements are approximate

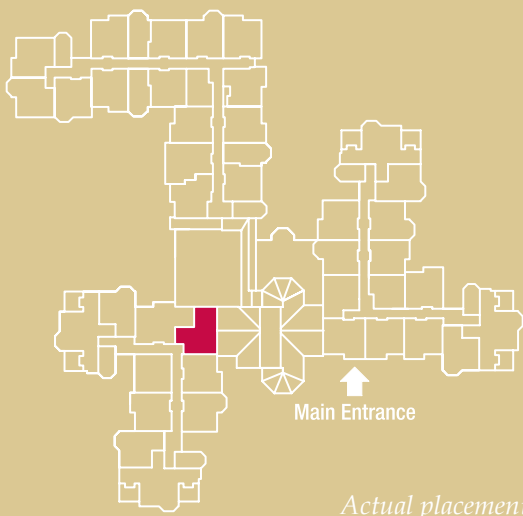


Actual placement

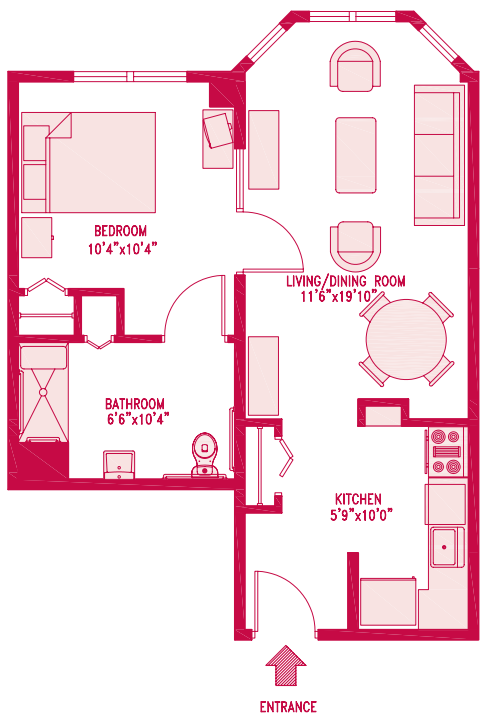
THE CHESTNUT



1 BEDROOM
562 S.F.
3RD FLOOR
ADDITIONAL CLOSET
Measurements are approximate

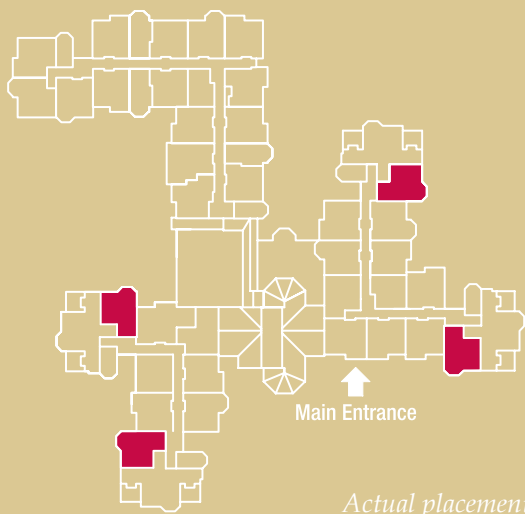


THE DOGWOOD

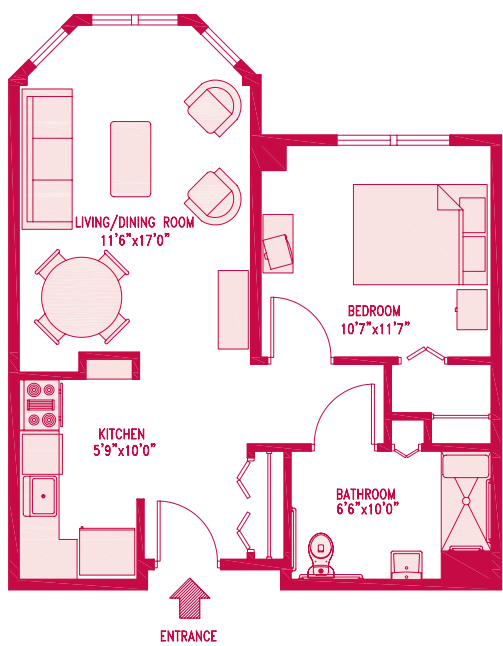


1 BEDROOM
553 S.F.
3RD FLOOR
BAY WINDOW
FRENCH DOORS

Measurements are approximate

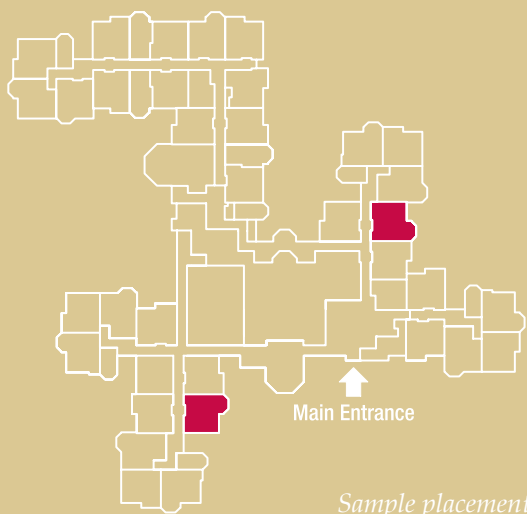


THE ELM



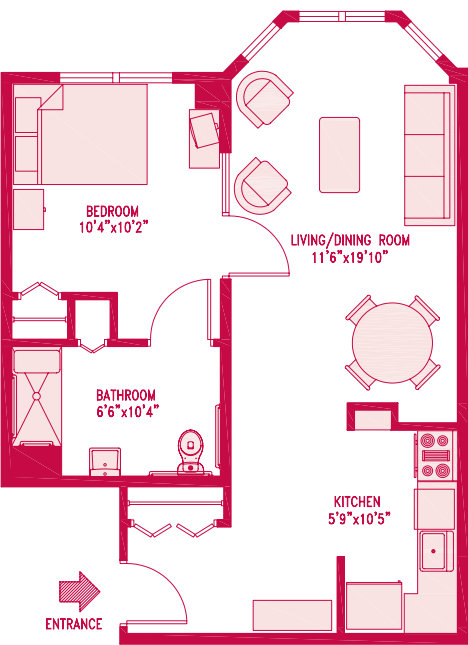
1 BEDROOM
567 S.F.
1ST, 2ND & 3RD FLOOR
BAY WINDOW
WALK-IN CLOSET

Measurements are approximate

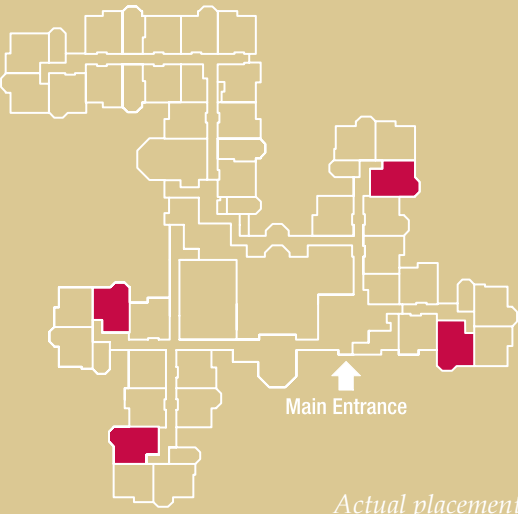


Sample placement

THE HAWTHORN

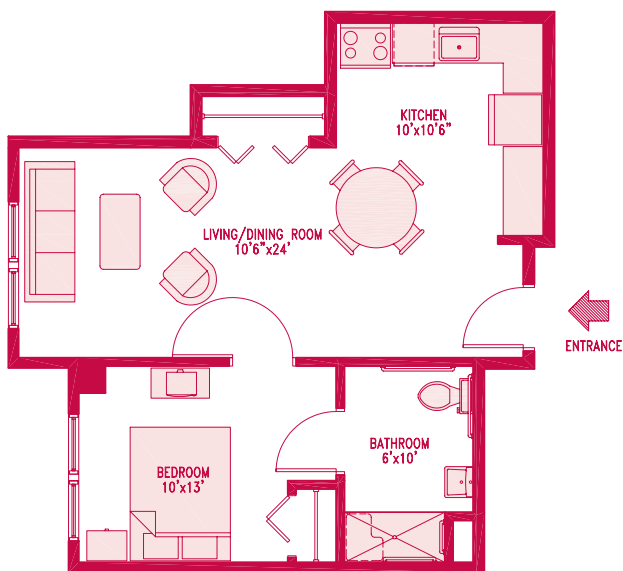


1 BEDROOM
594 S.F.
1ST & 2ND FLOOR
BAY WINDOW
FRENCH DOORS
FOYER
Measurements are approximate



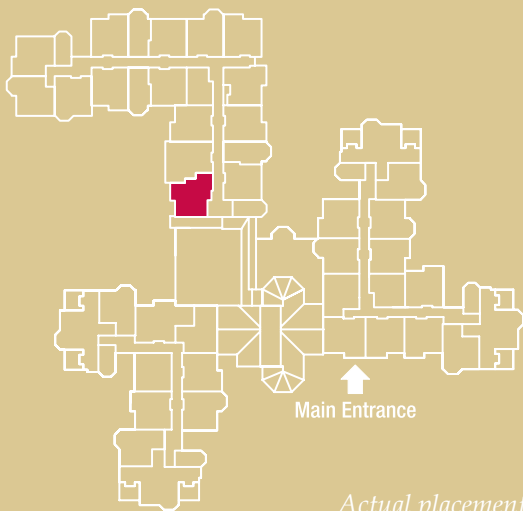
Actual placement

THE HICKORY



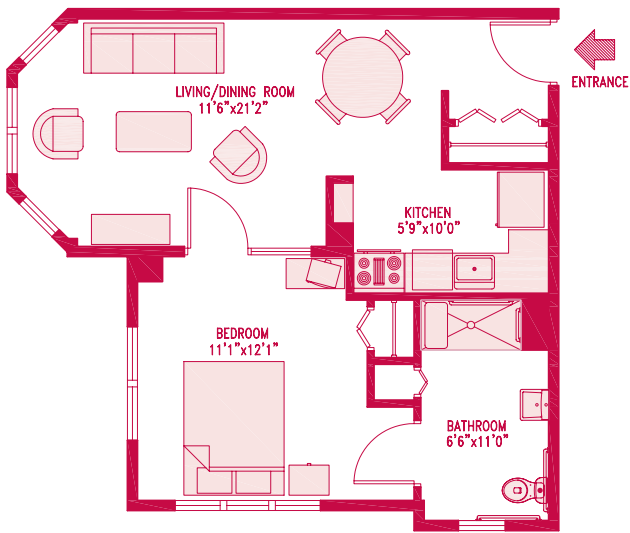
1 BEDROOM
591 S.F.
2ND & 3RD FLOOR
EAT-IN KITCHEN

Measurements are approximate



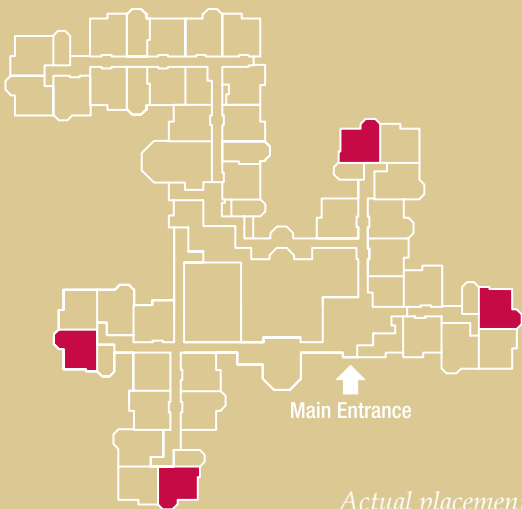
Actual placement

THE JUNIPER



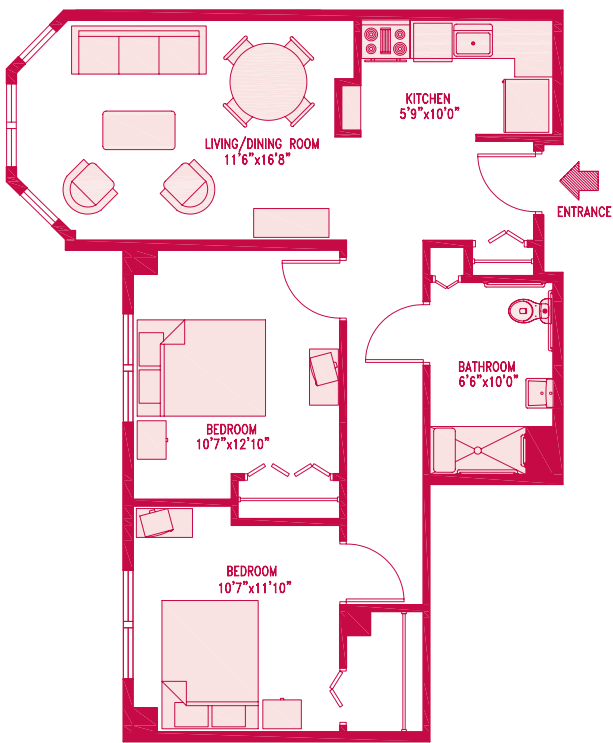
- 1 BEDROOM
- 563 S.F.
- 1ST & 2ND FLOOR
- BAY WINDOW
- ADDITIONAL BEDROOM WINDOWS
- BATHROOM WINDOW
- FRENCH DOORS
- CORNER LOCATION

Measurements are approximate



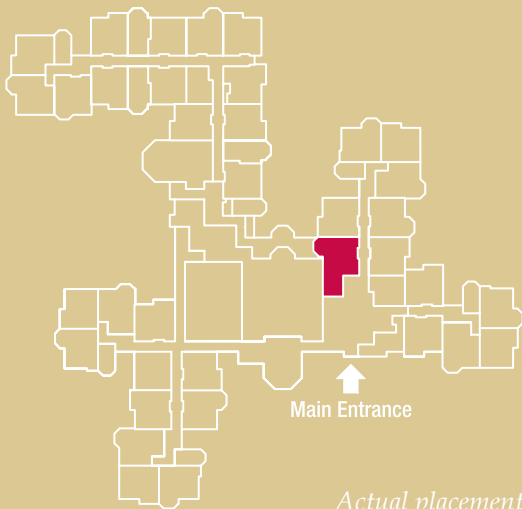
Actual placement

The Larch

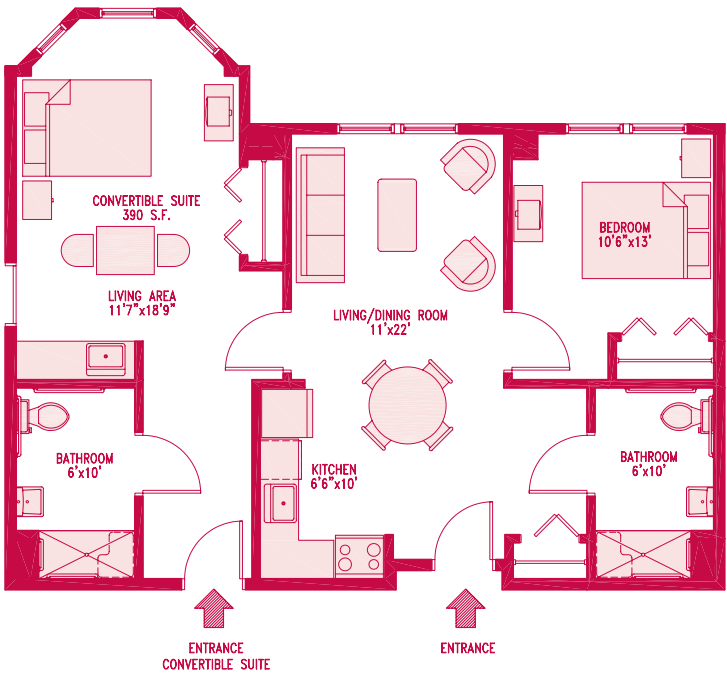


2 BEDROOM
770 S.F.
2ND FLOOR
BAY WINDOW
WALK-IN CLOSET

Measurements are approximate



THE LINDEN



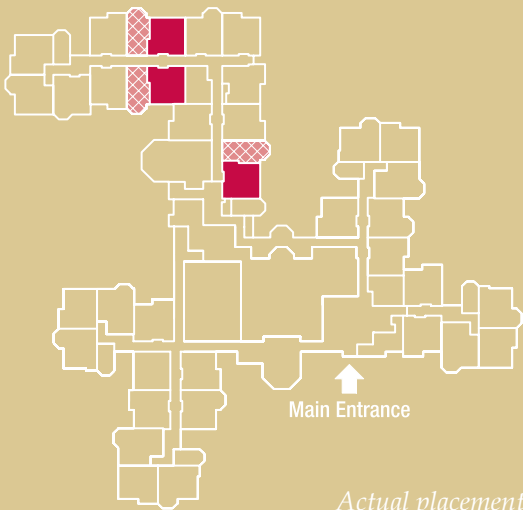
CONVERTIBLE APARTMENT

2 BEDROOM
935-939 S.F
1ST, 2ND & 3RD FLOOR
BAY WINDOW
EAT-IN KITCHEN
2 BATHROOMS

Measurements are approximate

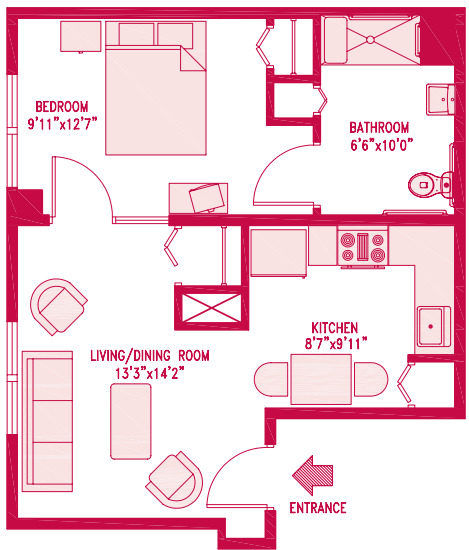
1 BEDROOM
545-549 S.F.
1ST, 2ND & 3RD FLOOR
EAT-IN KITCHEN

Measurements are approximate



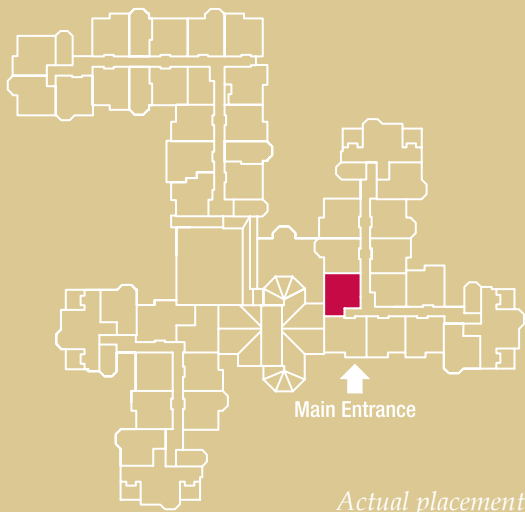
Actual placement

THE MAPLE

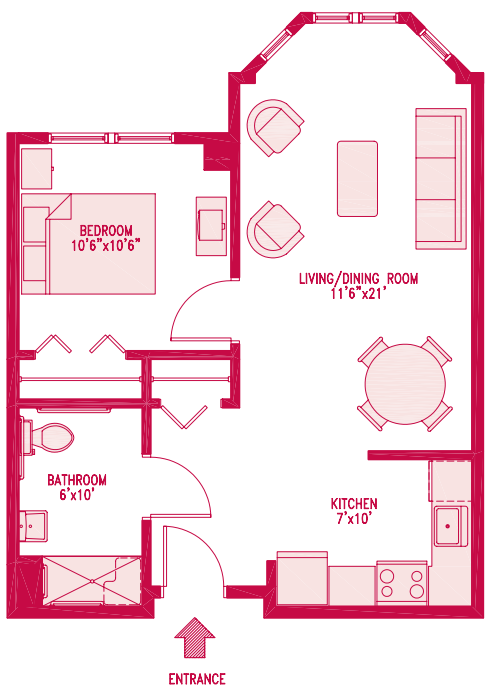


1 BEDROOM
497 S.F.
3RD FLOOR
FRENCH DOOR
EAT-IN KITCHEN

Measurements are approximate

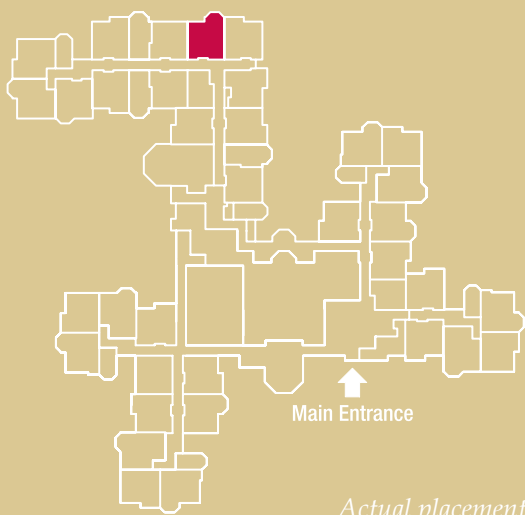


THE MULBERRY



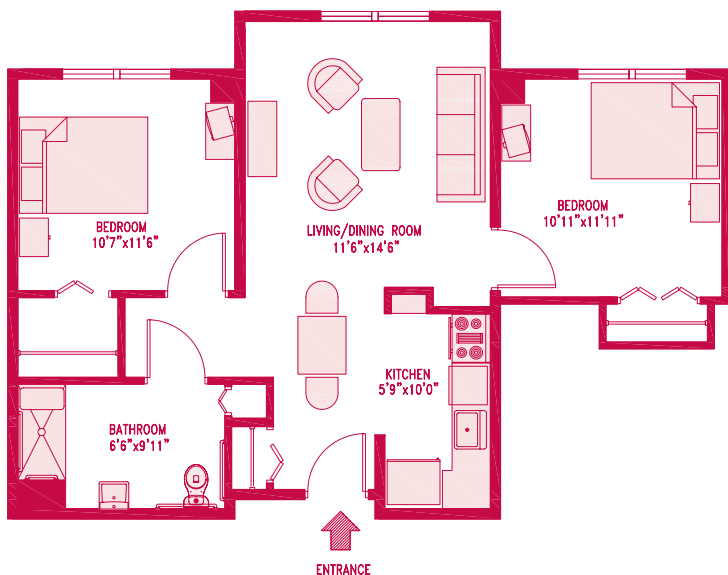
1 BEDROOM
610 S.F.
1ST, 2ND & 3RD FLOOR
BAY WINDOW

Measurements are approximate



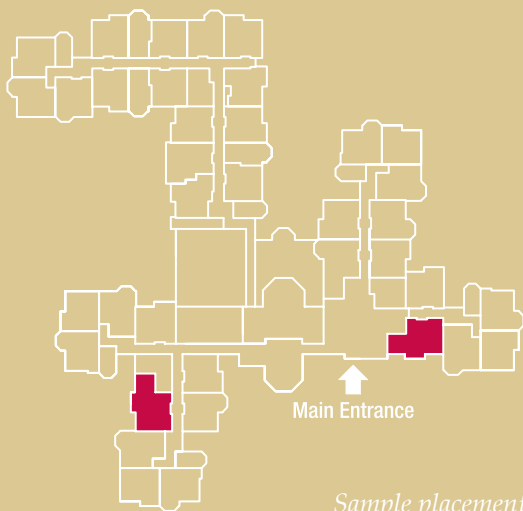
Actual placement

THE OAK

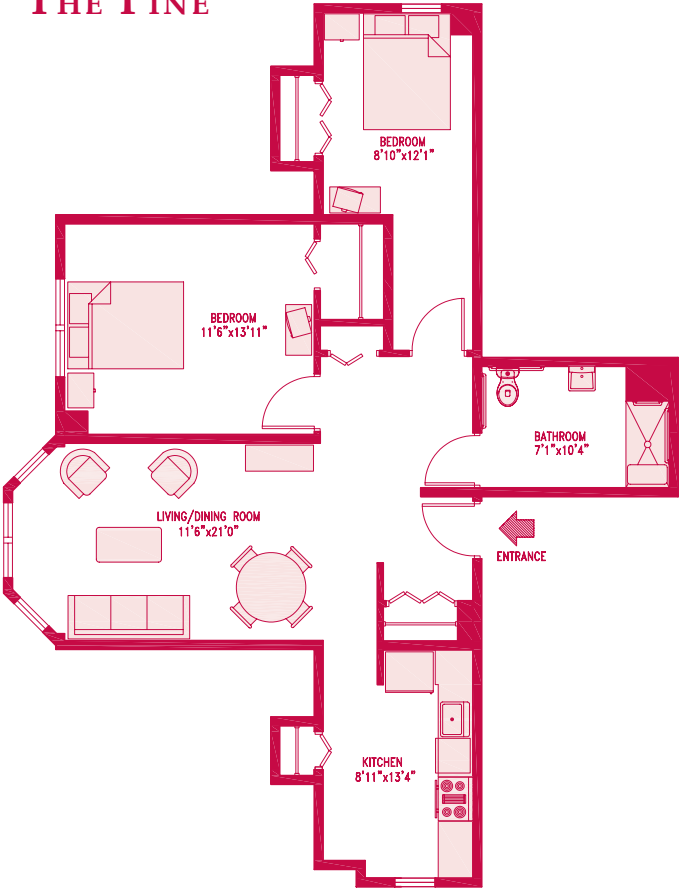


2 BEDROOM
693 S.F.
2ND & 3RD FLOOR
WALK-IN CLOSET

Measurements are approximate

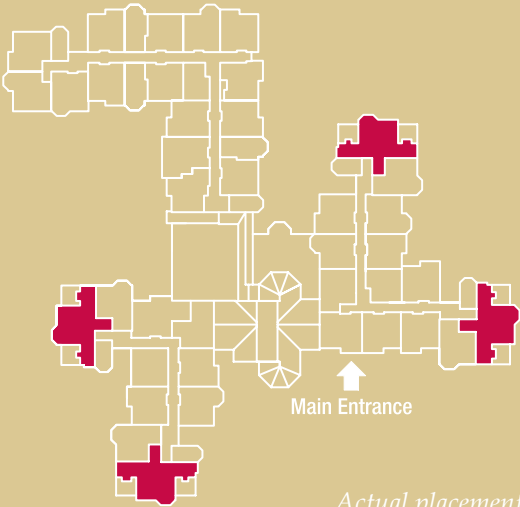


THE PINE



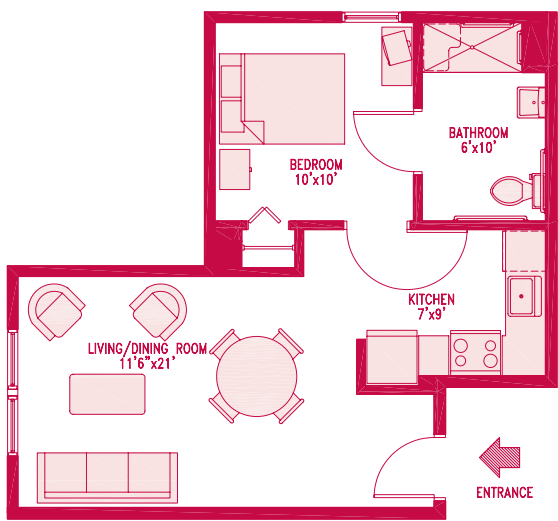
- 2 BEDROOM
- 900 S.F.
- 3RD FLOOR
- BAY WINDOW
- WALK-IN CLOSET
- ADDITIONAL CLOSET
- EAT-IN KITCHEN WITH WINDOW
- FOYER

Measurements are approximate



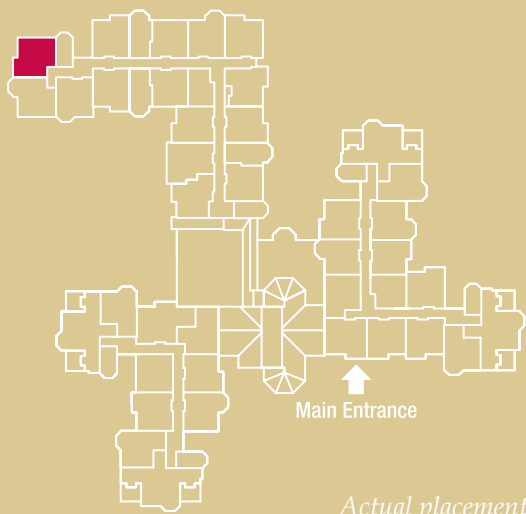
Actual placement

THE REDWOOD



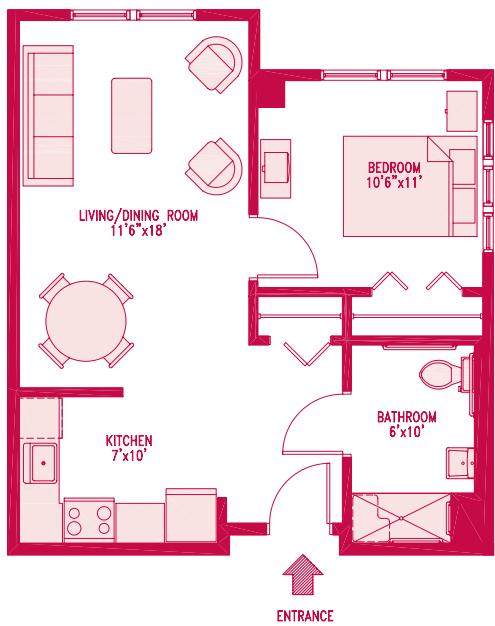
1 BEDROOM
517 S.F.
3RD FLOOR
CORNER LOCATION

Measurements are approximate



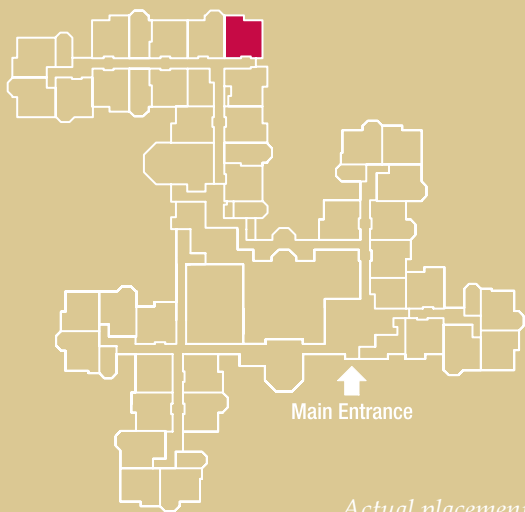
Actual placement

THE SPRUCE



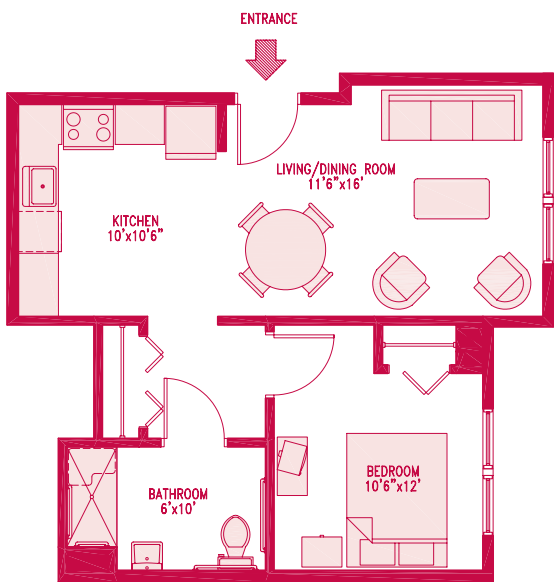
1 BEDROOM
603 S.F.
1ST, 2ND & 3RD FLOOR
ADDITIONAL BEDROOM WINDOWS
CORNER LOCATION

Measurements are approximate



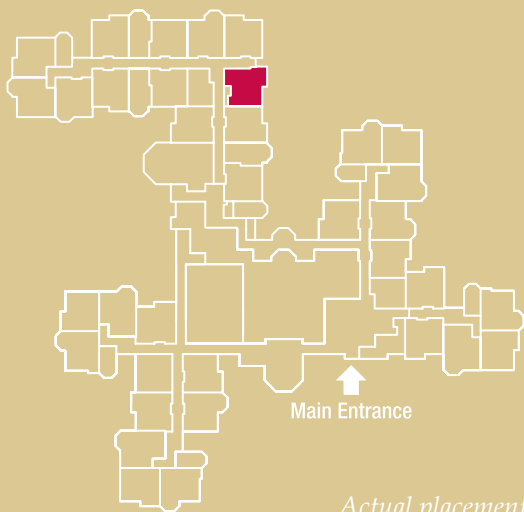
Actual placement

THE SYCAMORE

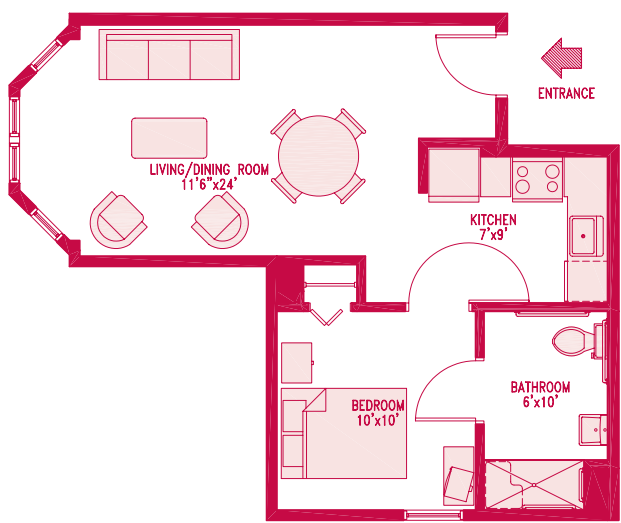


1 BEDROOM
574 S.F.
1ST, 2ND & 3RD FLOOR
EAT-IN KITCHEN

Measurements are approximate

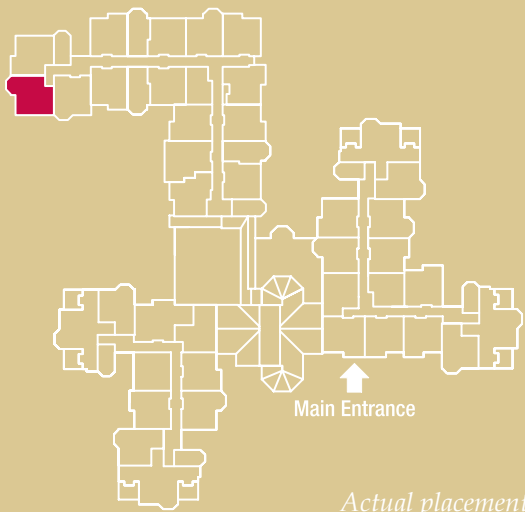


THE WALNUT

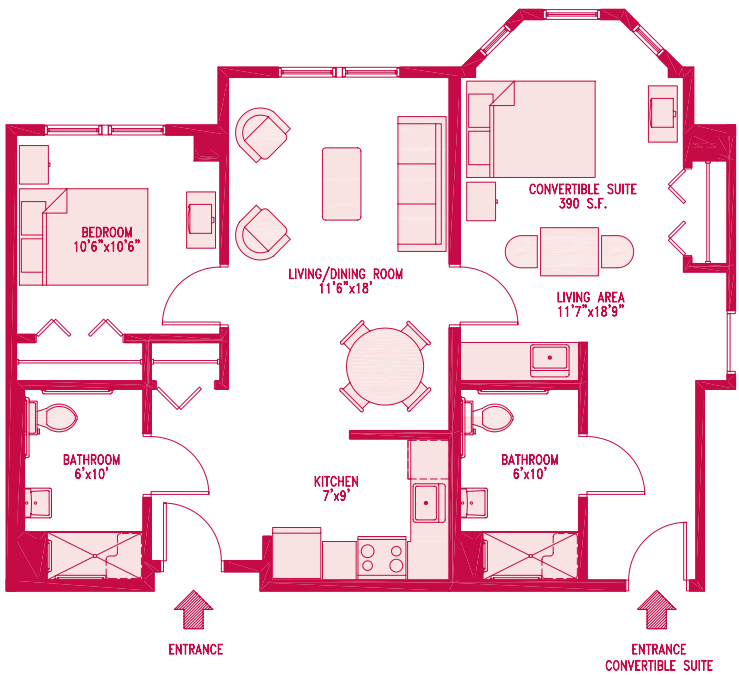


1 BEDROOM
543 S.F.
3RD FLOOR
BAY WINDOW
CORNER LOCATION

Measurements are approximate



THE WILLOW



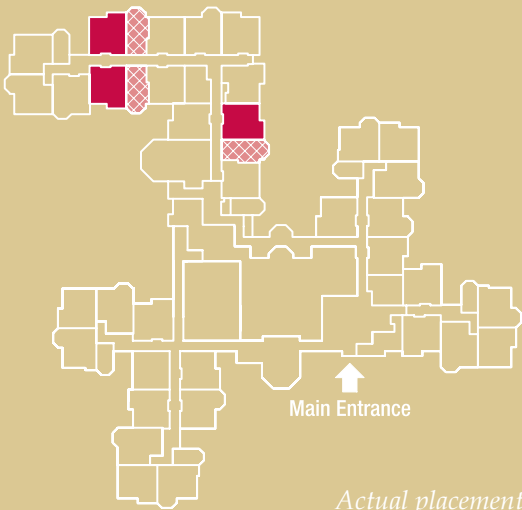
CONVERTIBLE APARTMENT

2 BEDROOM
970-977 S.F.
1ST, 2ND & 3RD FLOOR
BAY WINDOW
LARGE CLOSET
2 BATHROOMS

Measurements are approximate

1 BEDROOM
580-587 S.F.
1ST, 2ND & 3RD FLOOR
LARGE CLOSET

Measurements are approximate



Actual placement

Sample Menus

Dining at SummerWood is always a distinctive experience. We offer fine kosher cuisine in our elegant dining rooms. Our menu changes daily. Here are some of our members' favorite menu items:

SUMPTUOUS HOMEMADE SOUPS

CREAM OF BROCCOLI

MATZO BALL AND VEGETABLE

TOMATO CHICKEN AND RICE

FRESHLY PREPARED SALADS

GARDEN, GREEK, CAESAR, ISRAELI

ELEGANT ENTRÉES

VEAL SCHNITZEL SERVED WITH HOUSE RED SAUCE AND ROASTED GARLIC ORZO

POTATO-CRUSTED SALMON SERVED WITH ASPARAGUS

STUFFED TURKEY BREAST SERVED WITH MAPLE GLAZED BABY CARROTS

BAKED CHICKEN MARBELLA SERVED WITH GREEN AND YELLOW SQUASH

GRILLED LAMB CHOPS SERVED WITH ROASTED MEDLEY OF VEGETABLES

BAKED TROUT WITH LEMON AND THYME SERVED WITH ROASTED CAULIFLOWER

OSSO BUCO WITH POTATO LATKES AND HARICOT VERT

SOLE FRANCESE SERVED WITH QUINOA

DELECTABLE PAREVE DESSERTS

LEMON BARS

APPLE TURNOVERS

CARROT AND PINEAPPLE CAKE

FRUIT TART

BLACK FOREST CAKE

TIRAMISU

Sample Activities

*There's so much to do at SummerWood!
Here are some of the activities that can
keep you busy and engaged:*

YOGA CLASSES

WATER AEROBICS AND SWIMMING

HEALTH PRESENTATIONS AND SCREENINGS

THEATER EXCURSIONS

MUSEUMS, ART EXHIBITS AND GALLERIES

GUEST LECTURERS

ON-SITE MUSICAL PERFORMANCES

CURRENT EVENTS DISCUSSIONS

CULTURAL AND RELIGIOUS PROGRAMS

MOVIES

MIND EXERCISING PROGRAMS

PAINTING AND DRAWING CLASSES

MANDELL JEWISH COMMUNITY CENTER
ACTIVITIES

SENIOR CENTER ACTIVITIES

UNIVERSITY OF HARTFORD PRESIDENT'S
COLLEGE PROGRAMS ON CAMPUS AND ON SITE

SHOPPING EXCURSIONS

SING-A-LONGS

LOCAL HIGH SCHOOL CONCERTS

CASINO TRIPS

CRAFTS

SAFETY AWARENESS PROGRAMS

CARDS AND BOARD GAMES

GAZEBO CONCERTS

CLUBS (BOOK, POETRY, GARDEN, NEEDLEWORK)

SUMMER OUTDOOR CONCERTS

CARD GAMES

Directions

I-84 EASTBOUND

Take exit 41.

Turn left onto South Main Street.

Travel 4.6 miles, to Route 185/Simsbury Road.

Turn right onto Simsbury Road.

Travel .3 miles.

SummerWood will be on your left.

I-84 WESTBOUND

Take exit 48, Asylum Street.

Turn right at end of ramp.

Travel 1.5 miles on Asylum Street to Scarborough Street.

Turn right onto Scarborough Street.

Go to the end, turn left onto Route 44 west.

Turn right onto Route 189/Bloomfield Avenue.

Travel 1.0 mile.

Turn left at light onto Route 185/Simsbury Road.

SummerWood will be on your right.

FROM I-91

Take exit 35 A-B.

Travel west on Route 218 for 4.5 miles, to Route 185/Simsbury Road.

Turn left onto Simsbury Road.

Travel .3 miles.

SummerWood will be on your left.



ENGAGING PEOPLE.

COMFORTABLE LIVING.

Imagine...



CULTURE OF SERVICE.

HOFFMAN SUMMERWOOD COMMUNITY

160 SIMSBURY ROAD

WEST HARTFORD, CT 06117

860-523-3808

WWW.HOFFMANSUMMERWOOD.ORG



A member of the Hebrew Health Care Family